



Education
Public Schools

Lake Illawarra South Public School

Newsletter

Term 1 Week 6: Monday 03 MARCH 2025

CALENDAR

MAR

- 03 Assembly 1:45pm
- 04 Healthy Deadly Kids (3M & 4B)
- 10 Assembly 1:45pm
- 10 Regional Swim Carnival
- 11 Healthy Deadly Kids (3M & 4B)
- 12 NAPLAN – Writing (Yrs 3 & 5)
- 13 NAPLAN – Reading (Yrs 3 & 5)
- 14 School Photo Day
- 17 Assembly 1:45pm
- 18 NAPLAN – Language Conventions
(Yrs 3 & 5)
- 19 NAPLAN – Numeracy (Yrs 3 & 5)
- 20 National Storytelling Day
- 21 International Day of Mathematics

CONTACT

Lake Illawarra South Public School

119-129 Reddall Parade
LAKE ILLAWARRA NSW 2528
DHARAWAL COUNTRY

Phone: 4295 1924

Fax: 4297 2803

Email: lakeillaws-p.school@det.nsw.edu.au

Web: www.lakeillaws-p.schools.nsw.edu.au

PRINCIPAL'S MESSAGE

Happy Week 6 everyone. I can't believe how quickly the term is flying by. There is a positive buzz around the school with students settled into their 2025 classes and working hard. Our new Kindergarten students have settled into the

routines of 'big school' and enjoying their learning time at school.

Thank you to the parents and carers who were able to take time out of their busy schedules to connect with classroom teachers for parent-teacher interviews last week. It is a valuable time to share information between home and school about your child's academic, social, emotional and behavioural progress. If you were not able to meet with your child's teacher and would like to speak with them, please contact the office to arrange an appointment.

Our Welcome Barbeque was another successful event held by the school to celebrate the wonderful community we have at Lake Illawarra South. Thank you to all those who were able to attend. A big shout out to Mr Aleckson who was our professional sausage turner for the night. We are always grateful for your assistance.

Repair work has been completed on the subsidence in the Western Playground by Shellharbour City Council. The area has been re-opened to students.

Karen Simula

Principal

NSW HEALTH DENTAL PROGRAM

Lake Illawarra South Public School is very excited to be working with NSW Health to offer **FREE** dental check-ups and preventative care to all students as part of a mobile dental program.

The program is scheduled to visit our school from 26th March to 2nd April.

A parent information and consent pack has been sent home with students and includes information sheets, consent forms and the program privacy statement.



LIBRARY MONITORS

Congratulations to the following students who have been selected as library monitors for 2025:

Will, Maxine, Kiara-Lyn, Caleb, Bella, Cooper I, Aiden, Asha, Koby K, Carter C, Storm, Phoebe, Casper and Serenity.

Ms Koerner is looking forward to working with you all this year.

DISTRICT SWIMMING CARNIVAL

Congratulations to the students who represented Lake Illawarra South Public School at the District Swimming Carnival. Our students are to be congratulated for their excellent behaviour and sportsmanship shown throughout the carnival. A big thank you to the families who transported our swimmers to and from the carnival. Your assistance is greatly appreciated.

A special mention to our team members who have qualified for the Regional Swimming Carnival. We are very proud of you.

Jacob M

Lukas E

Kobi E

Marlie L

Marcus W

Sebastian K

We wish you all the best for the upcoming competition.

CLEAN UP SCHOOLS DAY

Students gathered their buckets, bags, gloves and tongs to work collectively to remove litter and rubbish from the school grounds and the foreshore of Lake Illawarra last Friday. Students did a terrific job removing the rubbish and ensuring it was disposed of properly to protect our beautiful local environment. Thanks to Mr Bruce for coordinating this event for our school.

SCHOOL PHOTOS

School Photo Day is scheduled for Friday 14th March. Information about placing orders has been sent home with students. Any queries or additional photo orders should be directed to MSP Photography on 4261 3009 or via their website <https://www.msp.com.au>

VOLUNTEER INDUCTIONS

If you wish to get involved in our school community by volunteering, we ask that you attend our annual volunteer induction session. Annual inductions are required for all volunteers that work across our school. This includes activities such as helping with P&C events and assisting in classrooms. Our next induction sessions will be held on Tuesday 11th March. One session will be held at 8:40 am and another at 2:50pm. The induction takes approximately 15 minutes to complete.

NAPLAN

Shortly, students in Years 3 and 5 will undertake NAPLAN assessments. NAPLAN provides schools with valuable information about students' learning progress in literacy and numeracy. NAPLAN is only one of the methods we use to assess student learning.

NAPLAN will take place from 12th March to 19th March at Lake Illawarra South Public School.

Preparation for NAPLAN

Students are not expected to study for NAPLAN and do not need excessive preparation or the use of services by coaching providers. You can support your child by reassuring them that NAPLAN is a part of their school program. IF you or your child/ren would like to know more about the NAPLAN online platform, you can go to the public demonstration site and do some practice tests.

Participation in NAPLAN

Adjustments are available for students who have diverse functional abilities and needs. On a case-by-case basis, reasonable adjustments for individual students can be made so they complete NAPLAN. Speak to your child's teacher to discuss the adjustments available.

Assessment Tips

You can support your child by reminding them to simply do their best. You can also encourage:

- a healthy diet
- drinking lots of water
- getting enough sleep
- exercise and relaxation time

These, along with arriving at school on time ready to sit the test, will help prepare our students to bring their best on the day.

THIRD PARTY SOFTWARE

Information regarding third party software will be sent home shortly. Please return the completed note to school as soon as possible. If you have any questions regarding the use of third party providers, please speak with your child's classroom teacher.

JEWELLERY AT SCHOOL

The NSW Department of Education requires that jewellery or other items that could cause injury to themselves or other students are not worn. Given that our students are involved in regular physical activity and play throughout the week, there are important restrictions on what students can wear to school as jewellery or accessory items. As a general rule, only stud earrings and sleeper earrings are acceptable jewellery. Nail polish and cosmetics should not be worn to school. Acceptable additional items include watches and sunglasses

SPECIAL RELIGIOUS EDUCATION

Parents and carers are able to change their child's SRE option at any time throughout the year. Please be aware that a request to change a student's current SRE option must be made in writing.

REMINDERS

- Supervision for students begins from 8:10am each morning. Students should enter the

school grounds and make their way to the mid-playground.

- The Pur Pur Avenue gate is locked at 9:00am. Students arriving after this time should enter via the main pedestrian gate on Reddall Parade.
- Please label all student belongings (hats, drink bottles, lunchboxes and containers, jumpers, etc). This allows for easy return to your child when they are misplaced.
- Students should have a wet weather clothing option in their school bag each day.
- Wearing a school hat during break times is a school expectation. Students who have misplaced their hat will play in the shade.
- Crunch & Sip happens during the morning learning session each day. Please pack some fruit or vegetables in your child's lunchbox for them to snack on at this time.

ROAD SAFETY

The beginning and end of the school day are busy times for pedestrians and vehicles outside schools. Parking signs are planned with your child's safety in mind. It is helpful for everyone if you park safely, even if you have to walk further to the school gate.

This is a good time to model positive road safety behaviour for your child. It is asked that parents and carers always:

- Park legally
- Avoid dangerous manoeuvres such as U-turns and three-point turns
- Give way to pedestrians
- Avoid using the school car park and driveways, including the canteen driveway
- Slow down near crossings
- Adhere to the 40km/h school zone speed limit
- Make sure your child uses the safety door (rear kerb-side door) to get in and out of the car.

CANTEEN

This term, Kelley's Place is opening three days per week. The canteen is open from Wednesday to Friday each week. Orders can be placed online using the school24 app. A copy of the 2025 menu is attached to the end of this newsletter.

BREAKFAST CLUB

Breakfast Club is held in the library each morning from 8:10am. There is no cost involved for students participating in Breakfast Club. Our breakfast program is supported by FoodBank Australia and Bakers' Delight.

FACEBOOK

Lake Illawarra South Public School's official Facebook page can be accessed using the following link:

<https://www.facebook.com/LakellawarraSouthPS?mibextid=LQQJ4d>

ATTENDANCE

We want to do all we can to be sure your child achieves their potential and enjoys being in school. We know that school is the best place to learn. By attending school every day, your child will get the most out of their learning and improve their career and life options.

When your child is absent, it is important to let the school know the reason why. This helps to offer support for you and your family if needed. If you are having trouble getting your child to school every day on time, please speak with staff so we can work together because every day matters.

Last fortnight there were 120 students with 100% attendance.

This is the student attendance data for the last fortnight broken down into year groups:

Kinder: 92%

Year 1: 87%

Year 2: 92%

Year 3: 90%

Year 4: 92%

Year 5: 94%

Year 6: 89%

POSITIVE BEHAVIOUR FOR LEARNING

Positive Behaviour for Learning (PBL) is a whole-school framework that promotes positive behaviour across a school and helps schools develop safe and supportive learning environments. Lake Illawarra South Public School has been a PBL school for a number of years. Students benefit from:

- increased time focused on instruction
- Improved social-emotional wellbeing
- positive and respectful relationships

- a predictable learning environment

Throughout the year, students are explicitly taught the school expectations through a series of lessons.

The focus for this week is *Respect – Share equipment and the playground*. Sharing resources and playground areas with others, encourages positive relationships, maintains a harmonious environment and promotes fairness amongst students.

CHAPLAIN NEWS

Our chaplain, Mrs Kahlia Devall, is on site each Wednesday and Friday to support students and their families with their wellbeing. If you would like your child to connect with Miss Kahlia, please contact your child's class teacher.

UNIFORMS

School uniforms are available from the front office. Please contact Ms Mayo to place your order.

School uniforms are able to be purchased by cash payment or EFTPOS facilities at the school office. Uniforms are not able to be purchased online.



LAKE ILLAWARRA SOUTH PUBLIC SCHOOL - CANTEEN MENU 2025 - Canteen will be open 3 Days (WED – FRI) for Recess & Lunch

SANDWICHES, WRAPS & SALADS - lunch only	HOT FOOD	DRINKS (Breakfast, recess & lunch)		MILK COMBOS
	Homemade Pizza			Pizza Combo \$6.80
Vegemite (V) \$2.20	Cheese (V) \$4.50	Water 600 ml \$2.50		Pizza – choose flavour (50c for BBQ meatlovers) + Milk (choose flavour)
Cheese (V) \$2.60	Ham & cheese \$4.50	Popper 200 ml apple/blackcurrant \$2.50		
	Hawaiian \$4.50			Pasta Combo \$7.30
Salad (V) \$4.70	BBQ Meat Lovers \$5.00 Gluten free base extra \$1	Milk 300 ml Chocolate/Strawberry \$2.50		Pasta Bolognese + Milk (choose flavour)
Ham or chicken \$3.60	Chicken Fingers			
Chicken, lettuce, mayo \$4.20	3 pack \$3.00	BITES		Wrap Combo \$7.50
Ham, cheese \$4.00	5 pack \$5.00	Carrot Sticks 50c		Chicken, lettuce, mayo wrap Fruit Milk – choose flavour
Ham or chicken salad \$5.50 <small>Salad consists of lettuce, tomato, cheese, beetroot, carrot & cucumber.</small>	Homemade Pasta Bolognese \$5.00	Milk Pots (3 max) 50c TNT \$2.00 Quelch Ice Blocks \$1.00		
Wraps are extra 80c	Homemade Chicken Burrito \$5.00	Frozen pineapple pops \$1.00		
GF bread available extra \$1.00	Homemade Beef Burger (Cheese & t/s) \$6.00	Custard Tub \$1.50		
	Chicken Burger (lettuce & mayo) \$6.00	Jumpy's \$1.50		
SALAD TUBS (GF)	Deluxe Chicken Burger (salad) \$6.50	Cheese & Crackers \$1.50		PICNIC BOXES (GFO)
Salad (V) \$5.50	Corn Cup (V) \$1.50	Rice Crackers – sour cream & chives \$1.50		Cheese, crackers, veggies, dip, fruit (V) \$3.50
Ham or chicken salad \$6.00	Homemade Garlic Bread \$2.20	Homemade Apple Muffins (GF) \$2.00		Add ham to above box \$4.50
		Homemade Banana Muffins \$1.50		
		Juicies - lemonade \$2.00		
RECESS PACKS	JAFFLES (Gluten free bread \$1 extra)	EXTRAS		BIRTHDAY TREATS
Banana, muffin & carrot sticks (V) \$1.80	Spaghetti \$4.00			Ice Blocks \$1.00 each Banana Muffins \$1.50 each Birthday Treats are an alternative for cakes. They can be ordered for the whole class through school24 with 2 days notice required. Treats to be picked up by students at lunch bell
Banana, muffin & fruit (V) \$2.30	Cheese (V) \$2.60	Tomato Sauce 30c		
Rice cracker, fruit & popper (GF, V) \$4.80	Ham & Cheese \$4.00			
	Cheesy Bolognese \$4.00	Forks/spoons (for items not purchased at canteen) 10c		
The menu is updated daily. Check our whiteboard for daily treats. Keep up to date on our specials & news via Facebook – Kelley's Place Lake South	Online Ordering is preferred Please login to www.school24.net.au or install the School24 mobile app Ordering closes at 9am daily School ID #25465963			A feedback letterbox will be placed near the canteen for the children & community to suggest any foods they would like sold, for any competitions they would like and for any feedback.

All Lessons
During School Hours
At The School!



MUSIC LESSONS

GUITAR KEYBOARD VOICE PIANO



- First Lessons free!
- Creative Kids
Voucher approved.

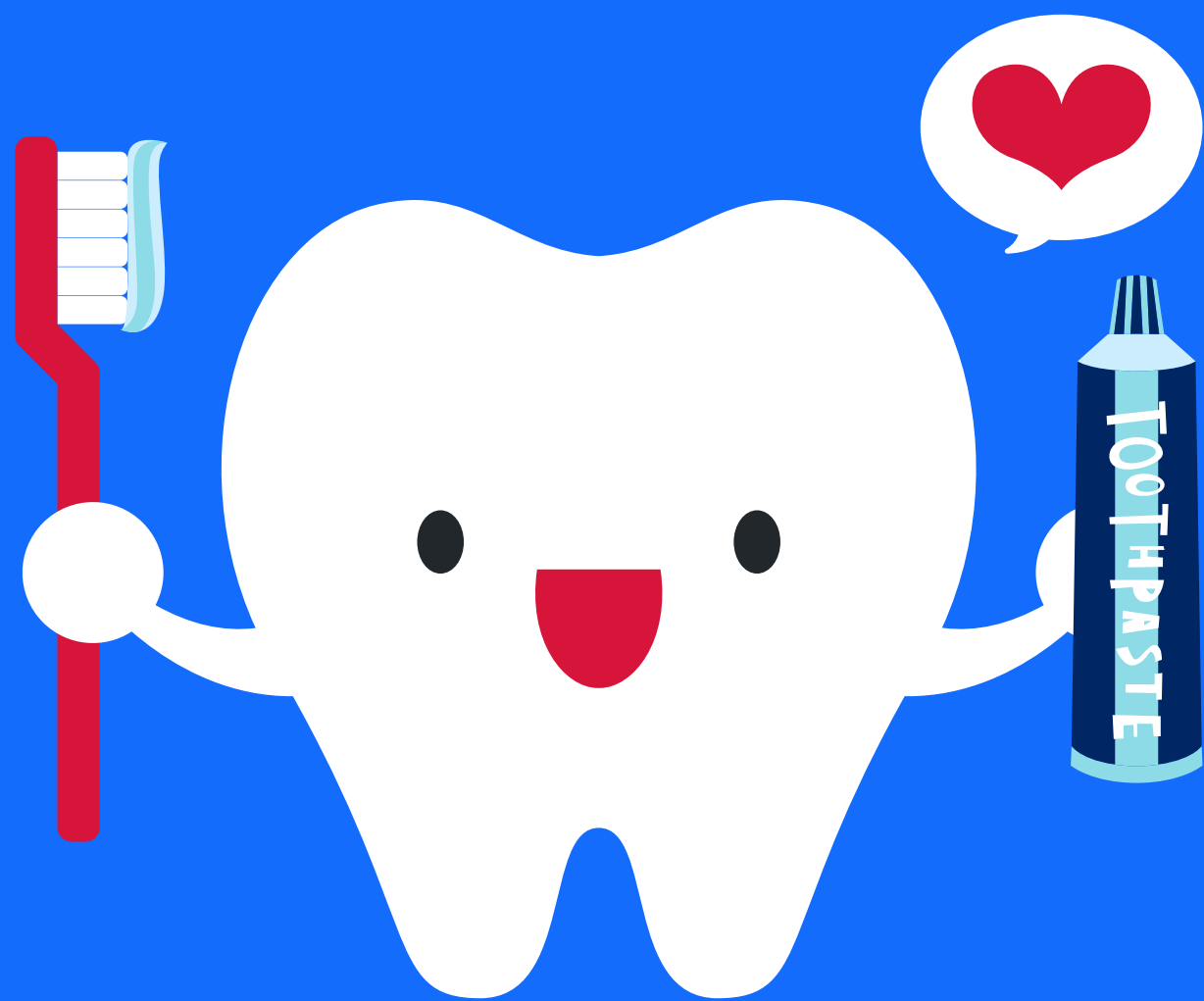


PRICES START AT \$10 PER LESSON

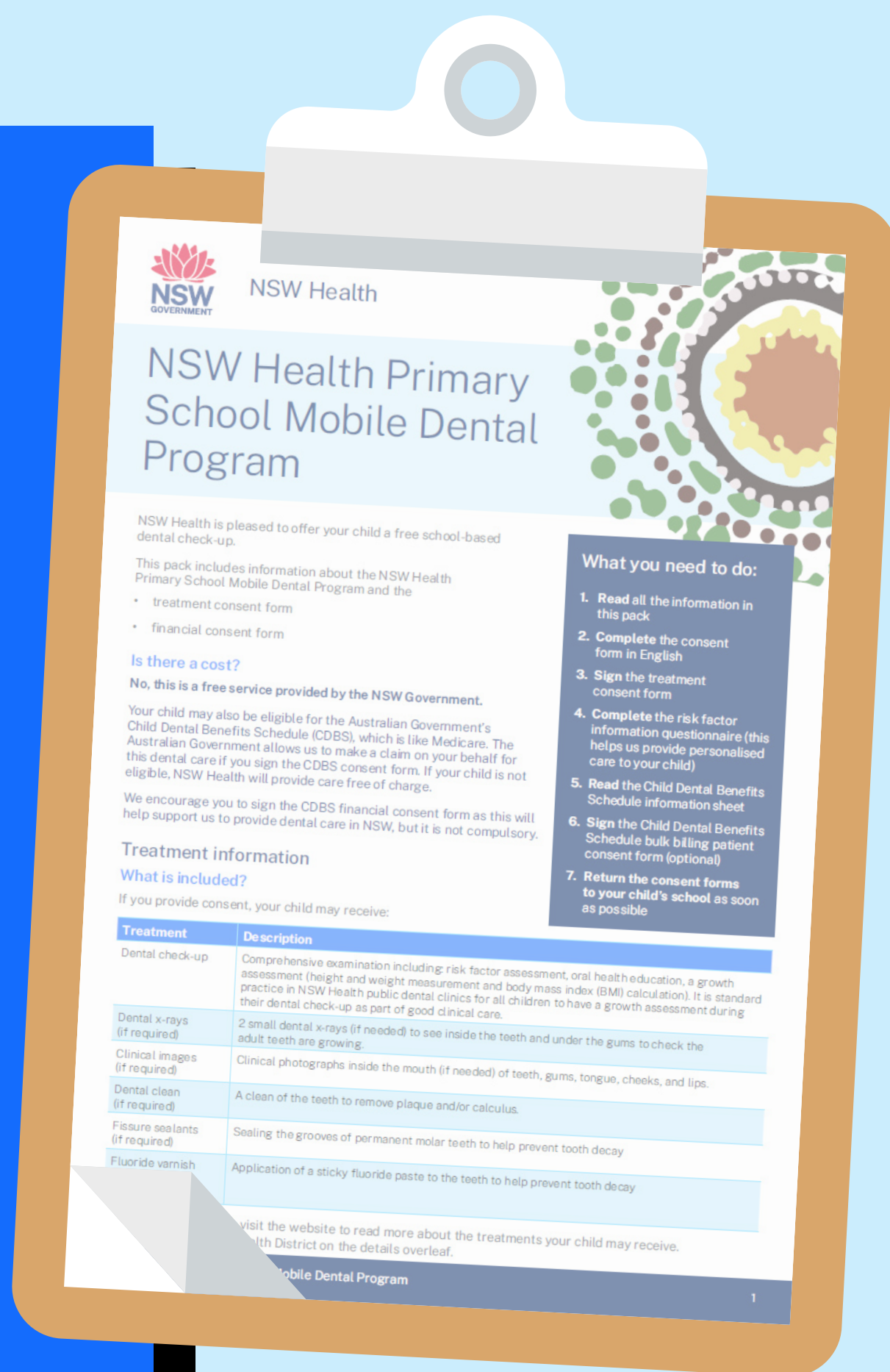


Anyone Can Whistle
MUSIC STUDIO

Jason Young
Phone - 0402026020
E-mail - anyonecan.jdy@gmail.com



Have you returned your child's dental consent form?



Holiday camps on sale now!



MINECRAFT • **ROBLOX**
Tech • Art & Craft • Sport



14 - 15 April
9:00 AM - 3:45 PM



Lake Illawarra South Public
School

www.codecamp.com.au/Lakeillaw

SAVE \$25

Use coupon code
SCHOOL25 at checkout

Supported by

 GROUP



GOOD CLEAN FUN

PLAY.AFL/AUSKICK

SHELLHARBOUR AUSKICK

MYIMBARR PLAYING FIELDS

Thursday's from Mid March

Contact Jess at

president@shellharbourswans.com.au



**PLUS, AN EXCLUSIVE
NAB AFL AUSKICK PACK**

AFL

PLAY



Australian
Air League

JOIN NOW

NSW Group

NSW GROUP IS NOW ENROLLING



Since 1934 the Australian Air League has been teaching young boys and girls nationwide all about aviation, while helping them develop important life skills like leadership, discipline, self confidence and teamwork. When you join the league you will make new friends and take part in fun and exciting activities, on the ground and in the air.

Each week you will attend your local squadron where you will learn valuable skills and take part in fun and interesting activities and classes. Some of our classes include Meteorology, Navigation, Photography and Community Service. Squadrons also attend training camps, sport and recreational days, flying experiences and ceremonial drill.

We welcome boys and girls from the age of 8 years old from all different cultures and backgrounds. Parents and families are welcome to support or even join their local squadron as a volunteer. All adult members and volunteers are Working with Children Checked.

The Australian Air League is running both a fun and educational programme that is making fine citizens out of our young Australians.

**FOR MORE INFORMATION ON THE AUSTRALIAN AIR
LEAGUE AND YOUR CLOSEST SQUADRON
PLEASE CONTACT**

www.airleague.com.au Email: info@airleague.com.au

Free Call: 1800 502 175



Wollongong High School
of the Performing Arts

WHSPA

Open

Night

IMAGINE WHSPA

Year 6 Parents &
Students are invited
to attend WHSPA's
Open Night.

BOOK YOUR TOUR

WEDNESDAY 12TH MARCH

Auditioned Students

Book through Trybooking
5.30pm | 6.30pm

In Area Students

Book through Trybooking
5.00pm | 6.00pm

Lysaght Street
FAIRY MEADOW NSW 2519



Scan to Book



NEWTOWN HIGH SCHOOL OF THE PERFORMING ARTS

AUDITIONS NOW OPEN



**Year 7 and Year 11 2026
INFORMATION AND ONLINE APPLICATION
VIA NEWTOWN HIGH SCHOOL OF THE PERFORMING ARTS WEBSITE
Dance, Drama and Music Audition Procedures**

Students currently in Year 6 or Year 10 2025 enrolled in public or non-government schools who are seeking entry into Year 7 or Year 11 in 2026 performing arts stream may apply for an audition in one or two of the three disciplines of Dance, Drama or Music.

Audition information and online application is located on the school's website:

[Home - Newtown High School of the Performing Arts](#)

[Auditions - Newtown High School of the Performing Arts](#)

To assist parents and carers completing the **'Moving into Year 7 in a NSW Government School'** form, please note the following:

- Newtown High School of the Performing Arts is a specialist performing arts high school providing the highest level of education to students with outstanding potential and/or achievement in Dance, Drama and Music.
- **If residing outside our catchment area**, Newtown High School of the Performing Arts has specific enrolment criteria which requires students to audition. Audition information and on-line applications may be found on our school's website.
- Student from **within our local catchment area** who have an interest and talent in one or two of the disciplines are encouraged, although not obliged, to audition for places in our performing arts stream via the online application process which is separate to an Expression of Interest provided to parents from their primary schools.
- The closing date for audition applications online is **Thursday 1 May 2025**.

To be eligible to apply, candidates must be Australian Citizens or holders of a visa granting permanent resident status in Australia on the day of their audition.

For audition enquiries email newtown-h.school@det.nsw.edu.au or contact 9519 1544 ext 105.